

MONTHLY MEMBERSHIP PROGRESS REPORT

District 22 B

Results as of: 3/31/2026

GMT:

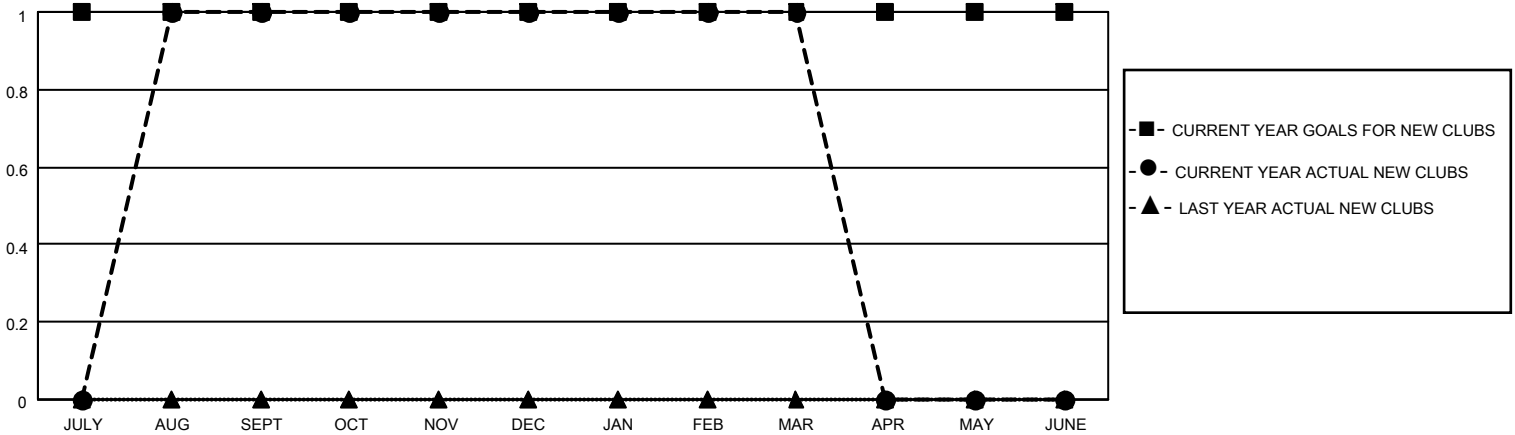
LOCATION MARYLAND

GMT CA

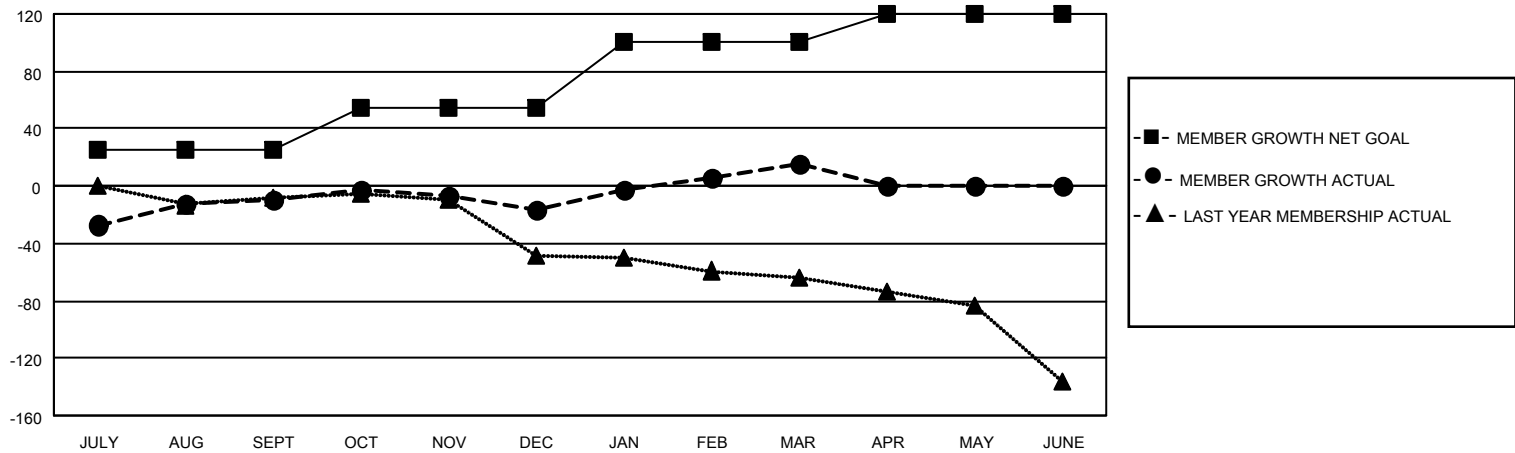
Clubs			
RESULTS FOR 2025-2026			
QUARTER	NEW CLUB GOAL	NEW CLUBS	DROPPED CLUBS
JULY/AUG/SEPT	1	1	0
OCT/NOV/DEC	0	0	0
JAN/FEB/MAR	0	0	0
APR/MAY/JUNE	0	0	0

Members			
RESULTS FOR 2025-2026			
QUARTER	MEMBER GROWTH NET GOAL	MEMBER GROWTH ACTUAL	DROPPED MEMBERS ACTUAL (including transfers)
JULY/AUG/SEPT	25	58	62
OCT/NOV/DEC	30	26	29
JAN/FEB/MAR	45	44	10
APR/MAY/JUNE	20	0	0

GOALS AND ACTUAL NEW CLUBS CUMULATIVE



GOALS AND ACTUAL MEMBERS CUMULATIVE



DROPPED CLUBS: 0	27 CLUBS OF 45 ADDED 1 OR MORE NEW MEMBERS	GENDER DISTRIBUTION MALE 782 (63.27%) FEMALE 453 (36.65%)
DROPPED MEMBERS DECEASED 15 CLUB CANCELLED 0 OTHER 86 TOTAL 101	CLICK HERE FOR CUMULATIVE MEMBERSHIP DATA	TOTAL FAMILY UNIT MEMBERS 173 FAMILY MEMBERS PAYING HALF DUES 87